

SPOTLIGHTS ...

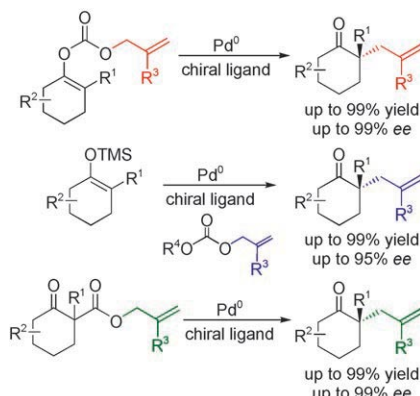
Allylations

J. T. Mohr, B. M. Stoltz*

Enantioselective Tsuji Allylations

Chem. Asian J.

DOI: 10.1002/asia.200700183



A fresh take: Several variants of the Tsuji allylation reactions have been rendered enantioselective in recent years. These important developments have provided valuable methods for the synthesis of enantioenriched cycloalkanon building blocks. The use of these asymmetric reactions in total synthesis has also been reported. TMS = trimethylsilyl.

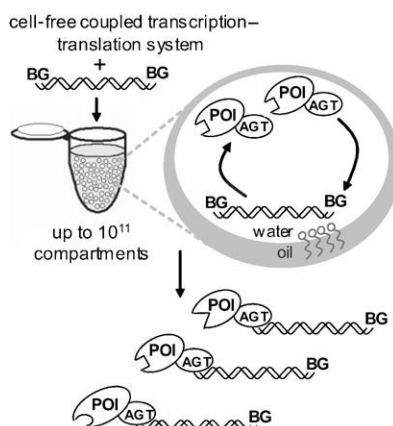
Protein Evolution

V. Stein, I. Sielaff, K. Johnsson, F. Hollfelder*

A Covalent Chemical Genotype–Phenotype Linkage for in vitro Protein Evolution

ChemBioChem

DOI: 10.1002/cbic.200700459



Display model. Proteins fused to *O*⁶-alkylguanine alkyltransferase (AGT) were expressed in vitro and conjugated to their coding DNA via *O*⁶-benzylguanine, a suicide inhibitor of AGT. The potential of this display system is demonstrated for several proteins in model selection experiments. Enrichments of up to 100-fold and DNA recovery rates of up to 2.4 % are achieved per round of selection.

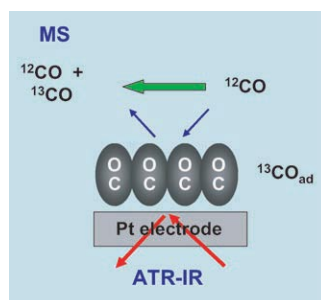
CO Adsorption

M. Heinen, Y.-X. Chen, Z. Jusys, R. J. Behm*

Room Temperature CO_{ad} Desorption/Exchange Kinetics on Pt Electrodes—A Combined In Situ IR and Mass Spectrometry Study

ChemPhysChem

DOI: 10.1002/cphc.200700425



Desorption and exchange of CO: The exchange of a saturated ¹³CO adlayer by gas-phase ¹²CO is monitored by in situ attenuated total reflection infrared spectroscopy (ATR-IR) spectroscopy and online mass spectrometry (see figure). First-order exchange and the dependence of the exchange rate on the partial pressure of ¹²CO indicate CO_{ad} desorption at room temperature and a desorption-controlled exchange mechanism.

Structure–Activity Relationships

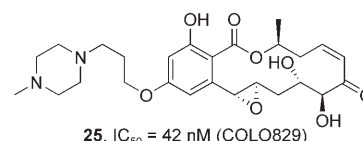
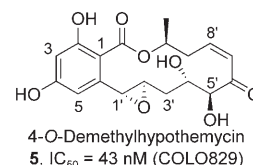
B. R. Hearn,* K. Sundermann, J. Cannoy, D. V. Santi

Semisynthesis and Cytotoxicity of Hypothemycin Analogues

ChemMedChem

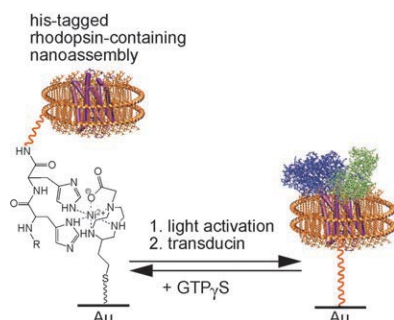
DOI: 10.1002/cmdc.200700128

Evaluation of the hypothemycin cytotoxicity SAR identifies the C4'–C8' region of the macrocyclic lactone as relatively intolerant of structural modifications. Manipulation of the 4-position of the resorcylic acid, however, provides new opportunities to improve solubility and pharmacokinetic properties as this site may be modified without negatively impacting cytotoxicity.



Eur. J. Inorg. Chem. **2007**, 5618–5619

Mass Spectrometry



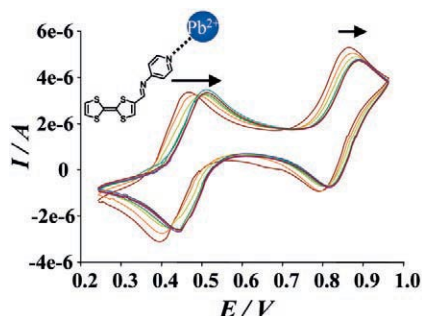
Delicate probing: When nanodisc assemblies are used to present membrane proteins on a biochip surface, interactions of these proteins can be studied by mass spectrometry. The method is illustrated with the protein rhodopsin, which is immobilized to a self-assembled monolayer by way of a his-tagged membrane scaffold protein. Upon activation of rhodopsin with light, the protein complex transducin binds and can be detected using SAMDI mass spectrometry.

V. L. Marin, T. H. Bayburt,
S. G. Sligar,* M. Mrksich*

Functional Assays of Membrane-Bound Proteins with SAMDI-TOF Mass Spectrometry

Angew. Chem. Int. Ed.
DOI: [10.1002/anie.200702694](https://doi.org/10.1002/anie.200702694)

Tetrathiafulvalene-imine-pyridine assemblies have been synthesized and shown to generate both electrochemical and colorimetric responses upon lead binding.

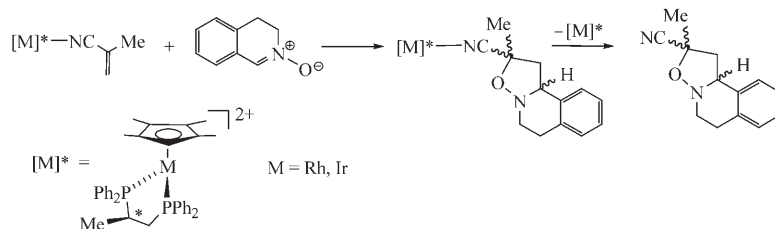


Responsive Ligands

J.-Y. Balandier, A. Belyasmin,
M. Sallé*

Tetrathiafulvalene-Imine-Pyridine Assemblies for Pb²⁺ Recognition

Eur. J. Org. Chem.
DOI: [10.1002/ejoc.200700705](https://doi.org/10.1002/ejoc.200700705)



Performance enhancement: By taking advantage of the knowledge of the relative abundance and stereochemistry of the active metallic intermediates present in the catalytic system (see scheme), a moderate enantioselectivity can be improved to achieve an excel-

lent level of selection. In addition, such studies provide explanations for unexpected trends, the relationship between the configuration at the metal to the stereochemical outcome, and the efficient reutilization of the catalyst.

Asymmetric Catalysis

D. Carmona,* M. P. Lamata,
F. Viguri, R. Rodríguez, F. J. Lahoz,
L. A. Oro

Half-Sandwich Rhodium (and Iridium) Complexes as Enantioselective Catalysts for the 1,3-Dipolar Cycloaddition of 3,4-Dihydroisoquinoline N-Oxide to Methacrylonitrile

Chem. Eur. J.
DOI: [10.1002/chem.200701140](https://doi.org/10.1002/chem.200701140)



On these pages, we feature a selection of the excellent work that has recently been published in our sister journals. If you are reading these pages on a computer, click on any of

the items to read the full article. Otherwise please see the DOIs for easy online access through Wiley InterScience.